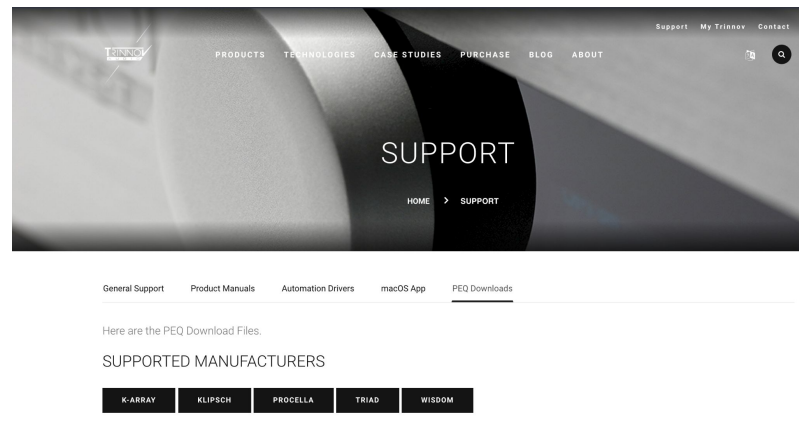




# PEQ Upload process

1. Download PEQ required from Trinnov website to your computer

## PEQ Upload Process

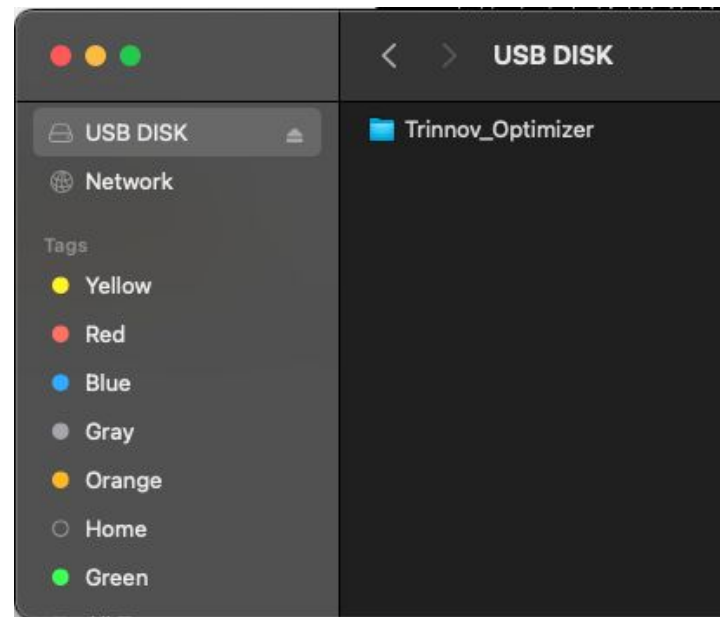




# PEQ Upload process

1. Download PEQ required from Trinnov website to your computer
2. Unzip the folder, Plug USB key into your Computer, Copy and paste the **Trinnov\_Optimizer** folder on to the USB key

## PEQ Upload Process

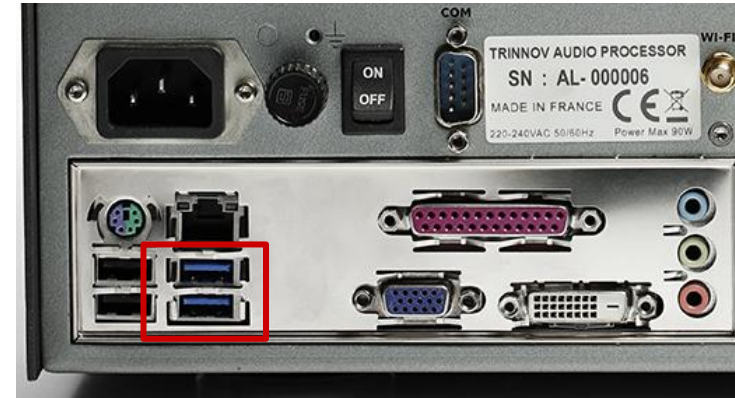




# PEQ Upload process

1. Download PEQ required from Trinnov website to your computer
2. Unzip the folder, Plug USB key into your Computer, Copy and paste the **Trinnov\_Optimizer** folder on to the USB key
3. Insert the USB key into the motherboard of the Altitude

## PEQ Upload Process

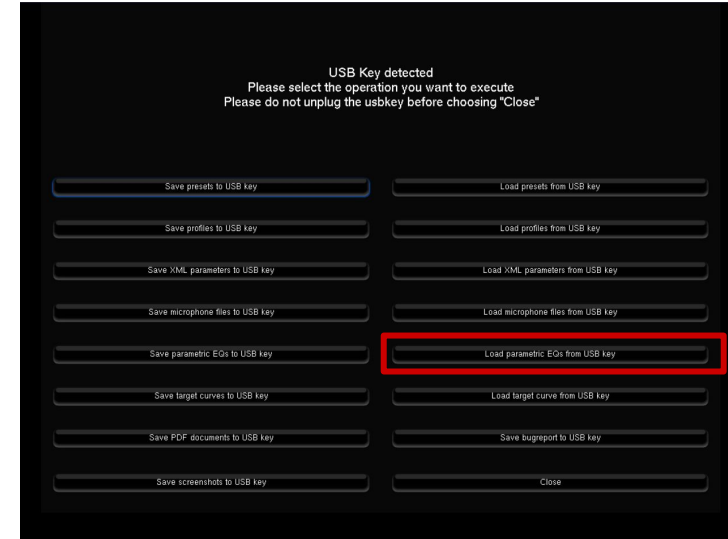


**WARNING:** only plug in the USB when required, when the unit is fully booted and remove when finished. NEVER leave a USB in the unit.

# PEQ Upload process

1. Download PEQ required from Trinnov website to your computer
2. Unzip the folder, Plug USB key into your Computer, Copy and paste the **Trinnov\_Optimizer** folder on to the USB key
3. Insert the USB key into the motherboard of the Altitude
4. When popup appears on the VNC interface choose choose **Load Parametric EQ from USB key.**

## PEQ Upload Process

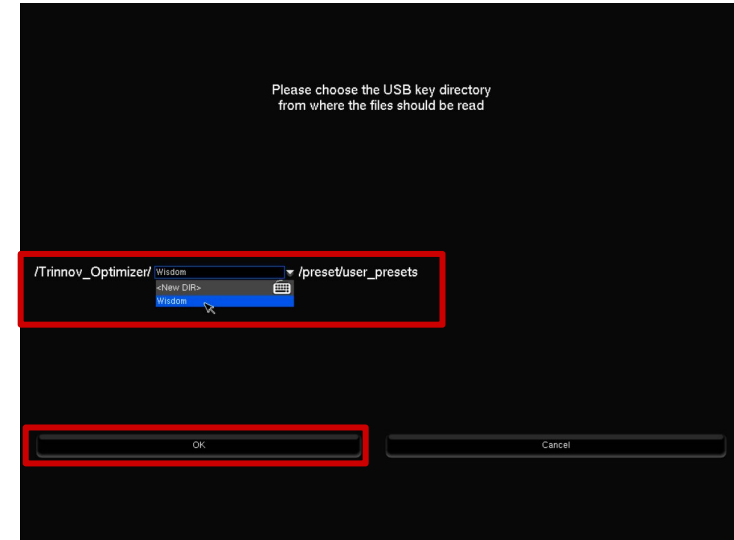




# PEQ Upload process

1. Download PEQ required from Trinnov website to your computer
2. Unzip the folder, Plug USB key into your Computer, Copy and paste the **Trinnov\_Optimizer** folder on to the USB key
3. Insert the USB key into the motherboard of the Altitude
4. When popup appears on the VNC interface choose choose **Load Parametric EQ from USB key.**
5. Next choose the directory available under Trinnov\_Optimizer from the drop down menu and press OK

## PEQ Upload Process

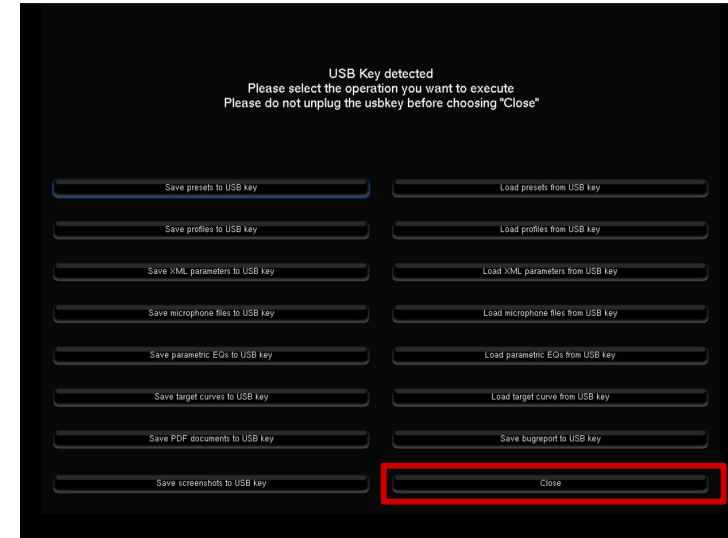




# PEQ Upload process

1. Download PEQ required from Trinnov website to your computer
2. Unzip the folder, Plug USB key into your Computer, Copy and paste the **Trinnov\_Optimizer** folder on to the USB key
3. Insert the USB key into the motherboard of the Altitude
4. When popup appears on the VNC interface choose choose **Load Parametric EQ from USB key**.
5. Next choose the directory available under Trinnov\_Optimizer from the drop down menu and press OK
6. Your PEQ is now loaded. Press **CLOSE** and **REMOVE** USB key from Altitude.

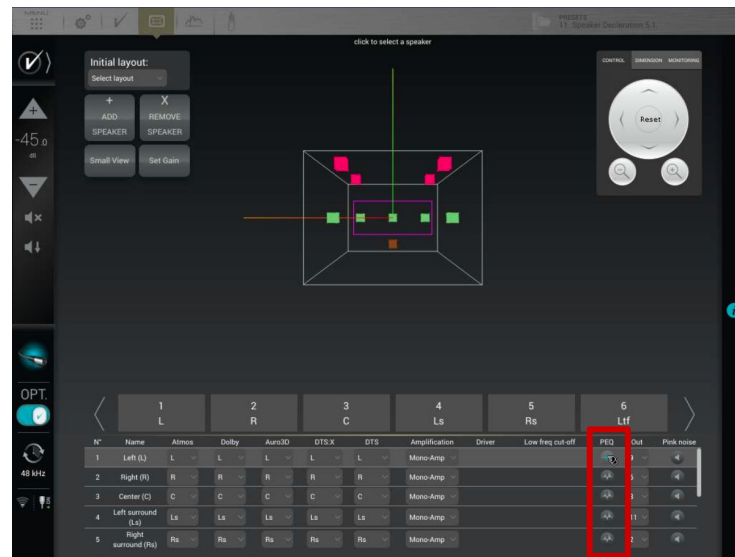
## PEQ Upload Process



# Adding PEQ to Speakers

1. On the Speaker Declaration page press PEQ button for the speaker you wish to add the PEQ

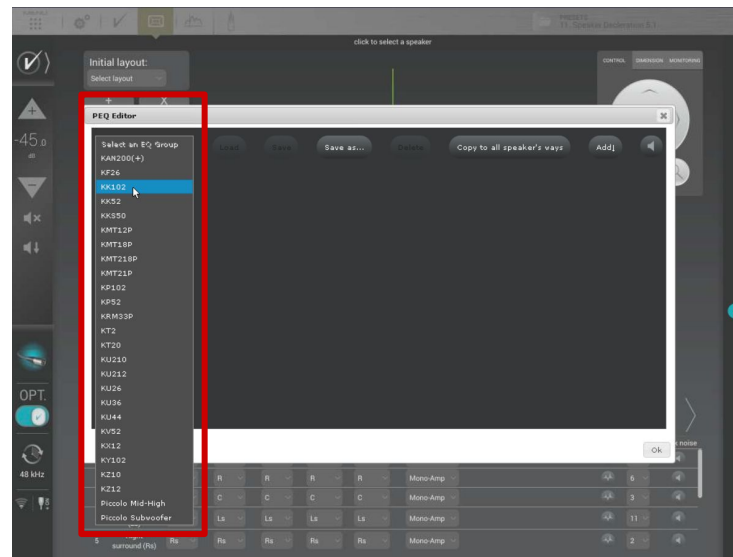
## Adding PEQ instructions



# Adding PEQ to Speakers

1. On the Speaker Declaration page press PEQ button for the speaker you wish to add the PEQ
2. Popup window will appear and choose the speaker model from the list

## Adding PEQ instructions

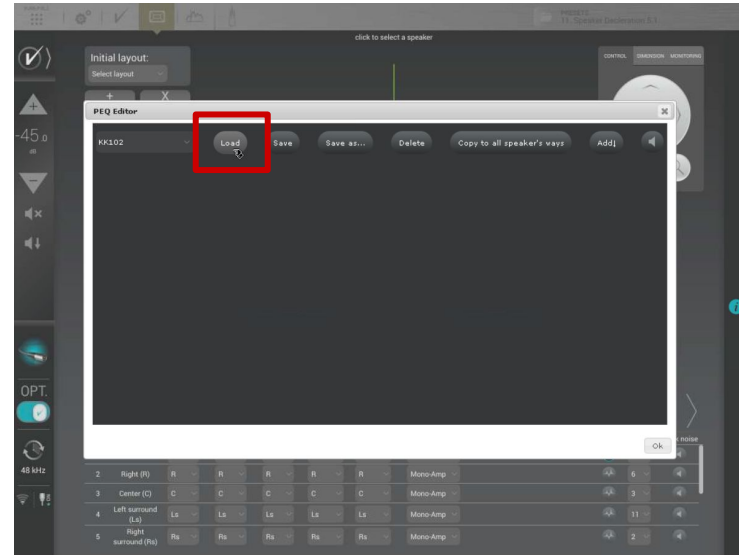




# Adding PEQ to Speakers

1. On the Speaker Declaration page press PEQ button for the speaker you wish to add the PEQ
2. Popup window will appear and choose the speaker model from the list
3. Once selected list will disappear. Press Load

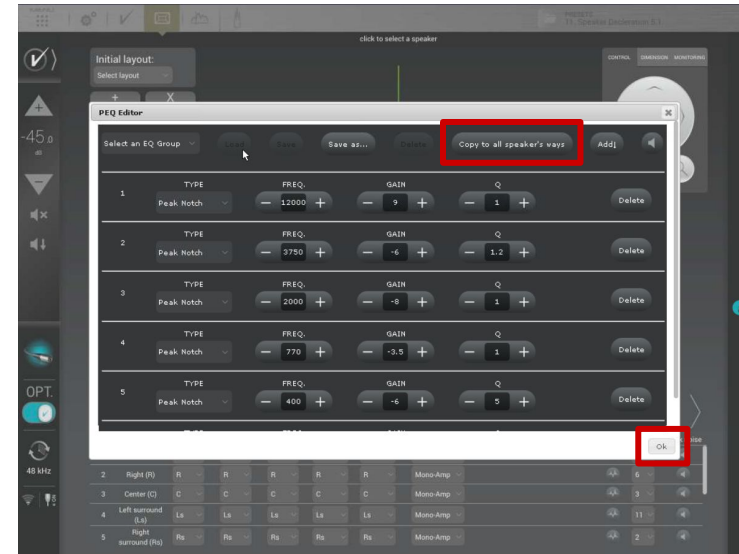
## Adding PEQ instructions



# Adding PEQ to Speakers

1. On the Speaker Declaration page press PEQ button for the speaker you wish to add the PEQ
2. Popup window will appear and choose the speaker model from the list
3. Once selected list will disappear. Press Load
4. PEQ will appear in window
  - If using multiway speakers (and separate PEQ are not provided for each speaker way) press Copy to all speaker ways

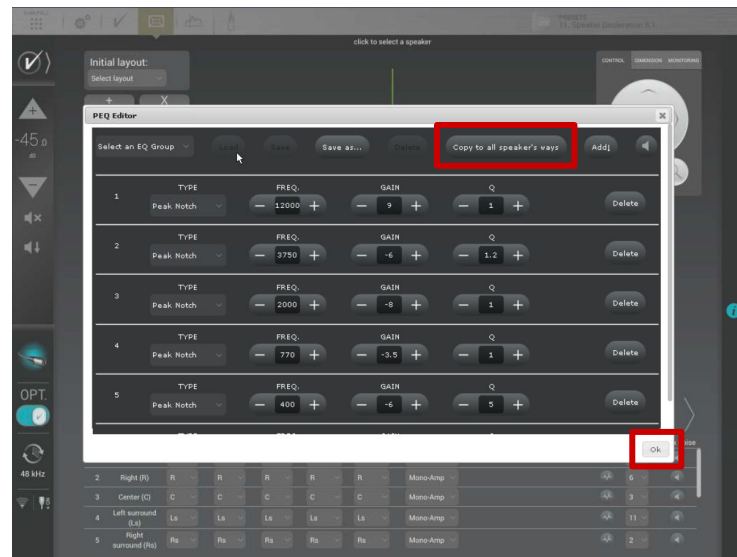
## Adding PEQ instructions



# Adding PEQ to Speakers

1. On the Speaker Declaration page press PEQ button for the speaker you wish to add the PEQ
2. Popup window will appear and choose the speaker model from the list
3. Once selected list will disappear. Press Load
4. PEQ will appear in window
  - o If using multiway speakers (and separate PEQ are not provided for each speaker way) press Copy to all speaker ways
5. Press OK to confirm

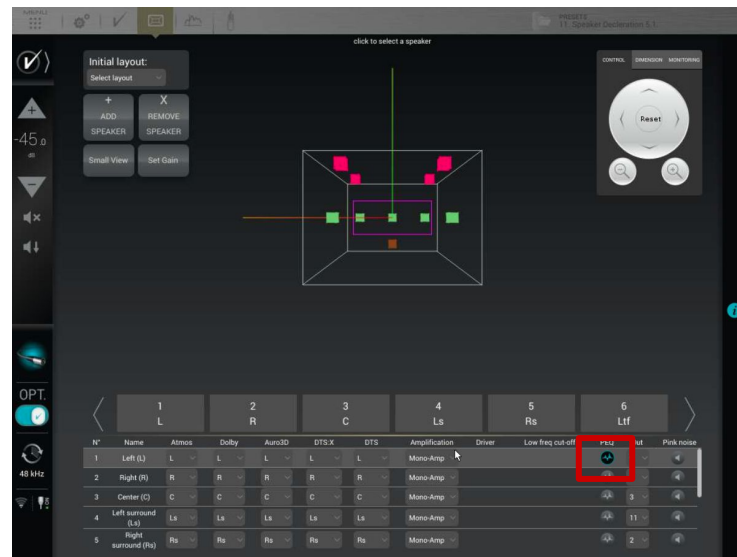
## Adding PEQ instructions



# Adding PEQ to Speakers

1. On the Speaker Declaration page press PEQ button for the speaker you wish to add the PEQ
2. Popup window will appear and choose the speaker model from the list
3. Once selected list will disappear. Press Load
4. PEQ will appear in window
  - o If using multiway speakers (and separate PEQ are not provided for each speaker way) press Copy to all speaker ways
5. Press OK to confirm
6. PEQ icon now highlighted blue

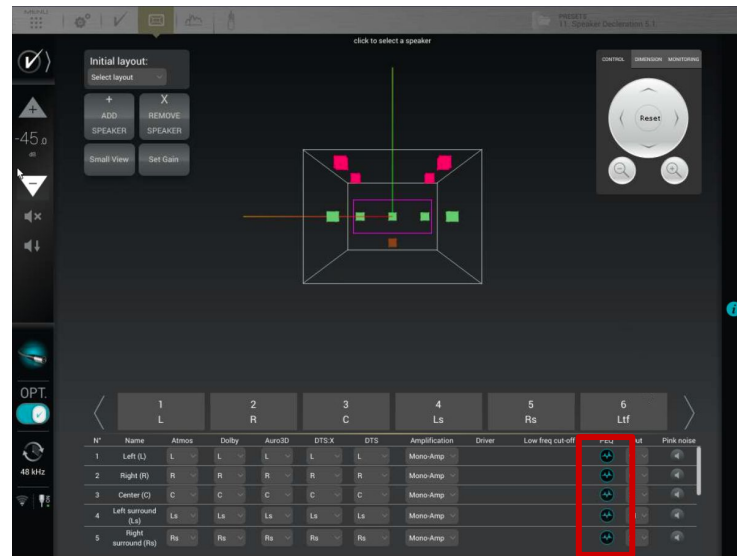
## Adding PEQ instructions



# Adding PEQ to Speakers

1. On the Speaker Declaration page press PEQ button for the speaker you wish to add the PEQ
2. Popup window will appear and choose the speaker model from the list
3. Once selected list will disappear. Press Load
4. PEQ will appear in window
  - o If using multiway speakers (and separate PEQ are not provided for each speaker way) press Copy to all speaker ways
5. Press OK to confirm
6. PEQ icon now highlighted blue.
7. Repeat for remaining speakers as required

## Adding PEQ instructions





Need Support?

# Thank you for downloading PEQ's

---

If you are having issues with any of these processes please contact:

**[support@trinnov.com](mailto:support@trinnov.com)**

